

**Farmers' cooperative
Agrargenossenschaft Trebbin eG**



**A practical approach combining
environmental and economic goals
on a large farm**

agt Agrargenossenschaft Trebbin eG

A high-performance company



Full range of technical services in rural areas



Comprehensive offers of agricultural services and management of 4000 ha of agricultural land



950 dairy cows (+ offspring)



135 employees

agt Agrargenossenschaft Trebbin eG

Wide range of services



JCB Distribution and rental of construction and agricultural machinery



Garage for commercial and agricultural vehicles, metal construction and welding facilities



Paint shop and sand blasting



Gas station with garage and car wash



Janitor service








Country hotel „Heidepark“



Catering as well as daily lunch in the canteen

Agrargenossenschaft Trebbin eG

Natural site conditions

-  Long-term average precipitation: 534 mm (1991-2020)
-  Long-term average temperature: 9,7 °C (1991-2020)
-  Arable land: - 80 % sand to loamy sand
(no ground water influence)
- 20% fenland (ground water influence)
-  Soil Assessment Rating (arable land): 23 points
-  Soil Assessment Rating (grassland): 27 points

Land use



cereals

ha
1315



canola

96



maize

1133



alfalfa

154



**ecological compen-
sation areas and green
fallow**

153



Intensive grassland

Extensive grassland

Nature conservation grassland

ha

770

339

62



winter rye

ha
401



winter triticale

285



winter barley

269



winter wheat

321

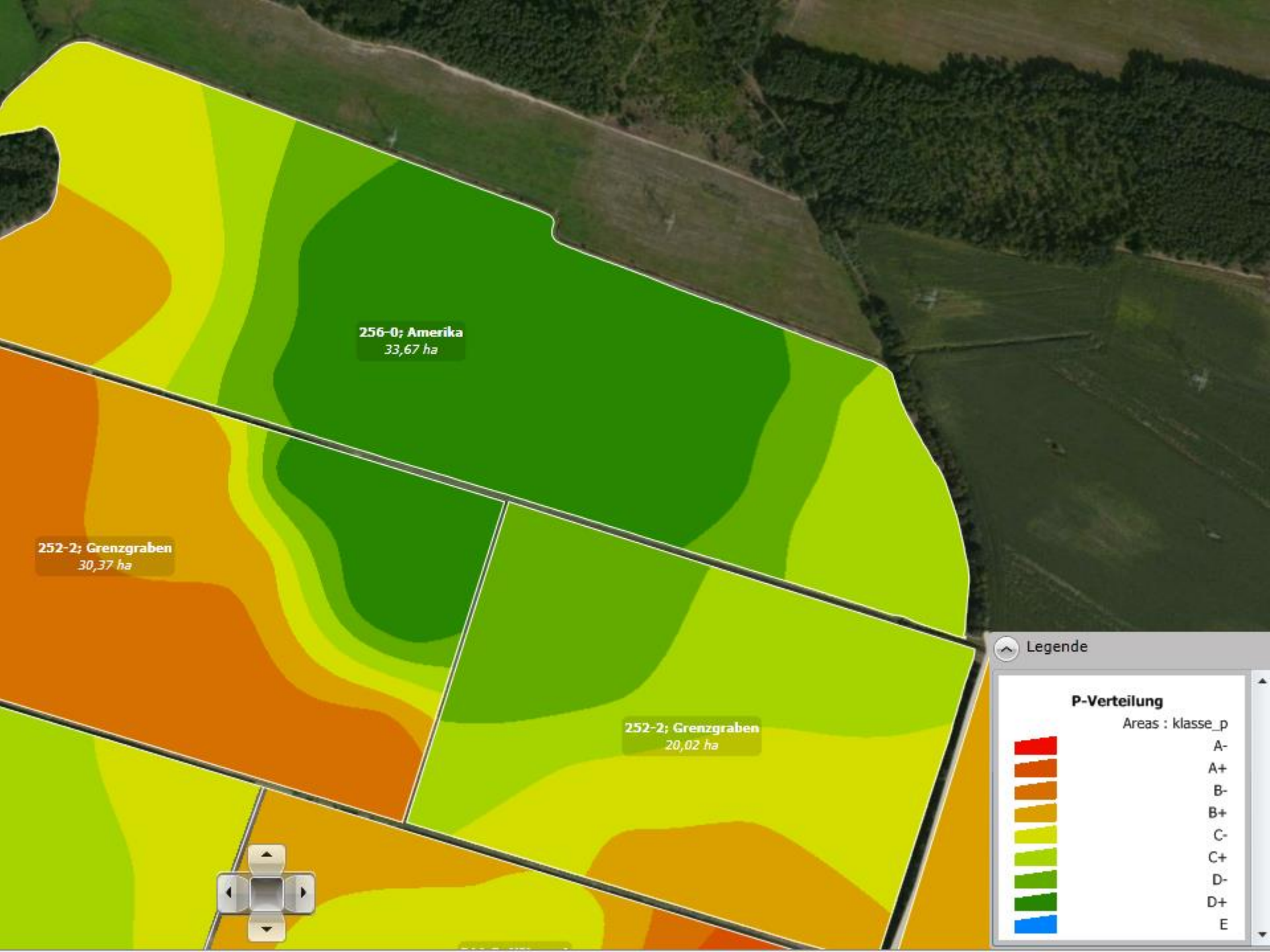


summer rye

39

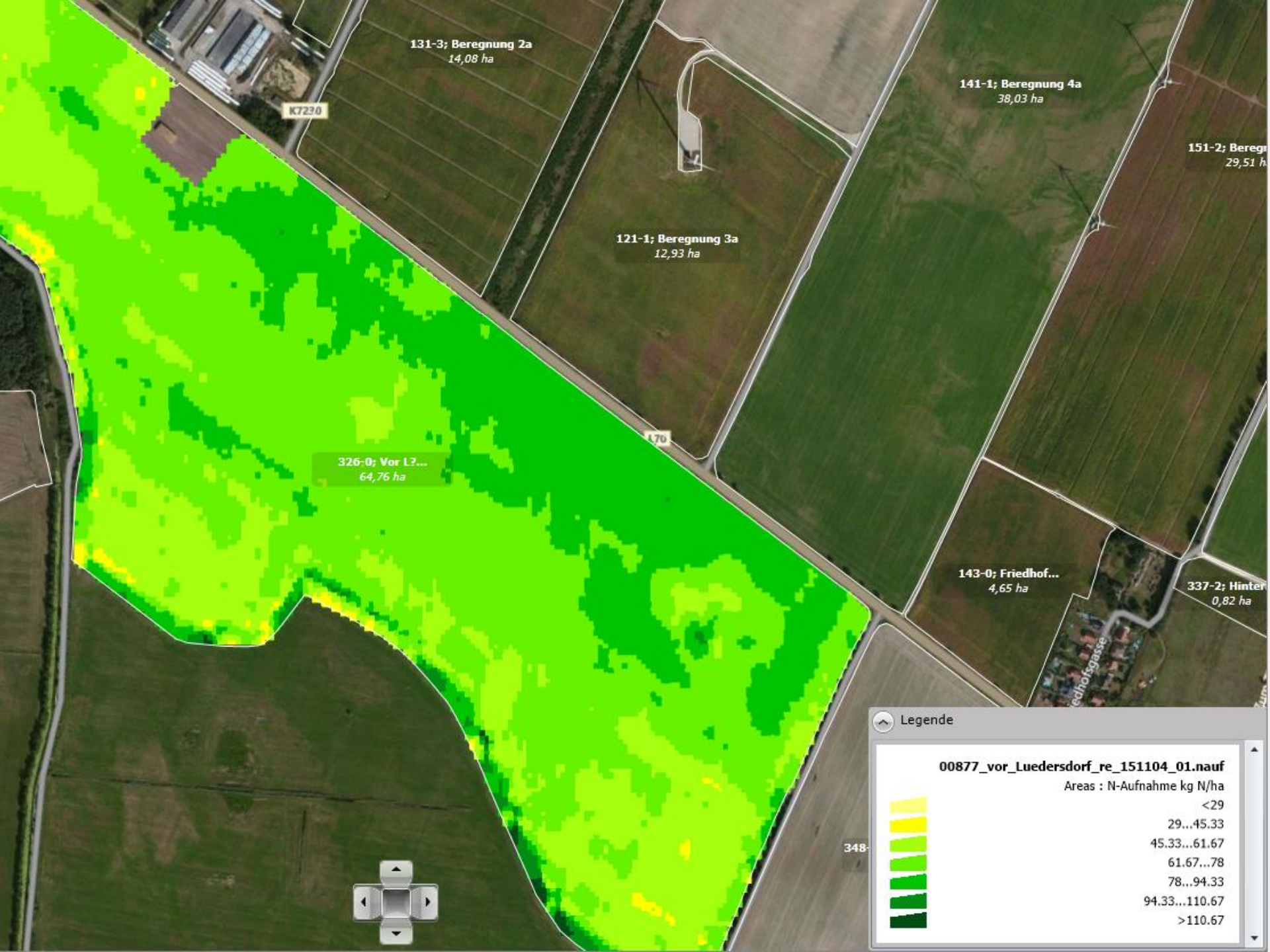
Winter rye in June (heterogeneous soil fertility)











131-3; Beregnung 2a
14,08 ha

141-1; Beregnung 4a
38,03 ha

151-2; Beregnung 4b
29,51 ha

121-1; Beregnung 3a
12,93 ha

326-0; Vor L7...
64,76 ha

143-0; Friedhof...
4,65 ha

337-2; Hinter...
0,82 ha

K7230

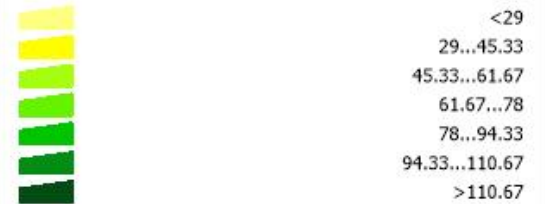
L70

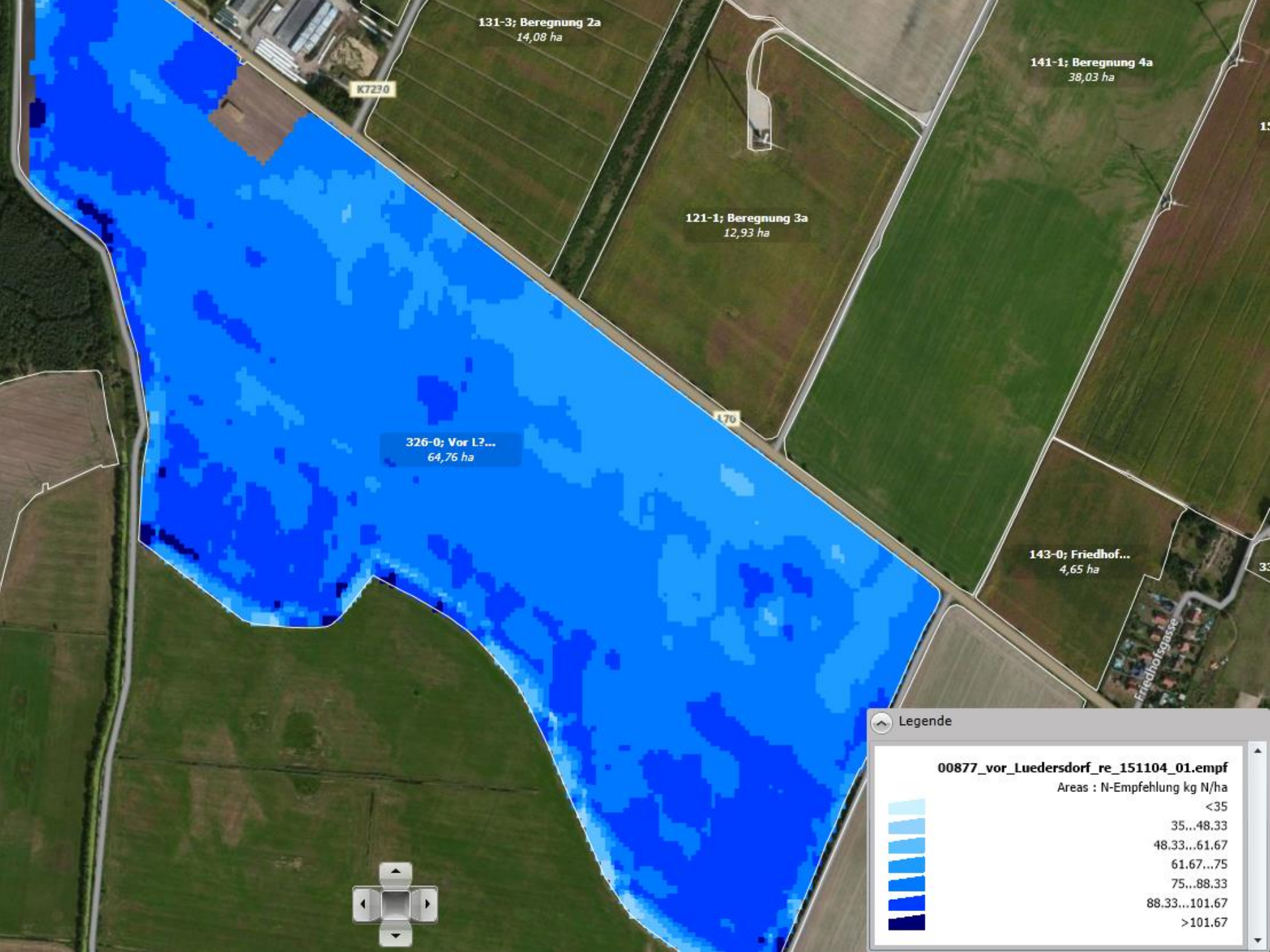
348

Legende

00877_vor_Luedersdorf_re_151104_01.nauf

Areas : N-Aufnahme kg N/ha





131-3; Beregnung 2a
14,08 ha

141-1; Beregnung 4a
38,03 ha

121-1; Beregnung 3a
12,93 ha

326-0; Vor L2...
64,76 ha

143-0; Friedhof...
4,65 ha

Legende

00877_vor_Luedersdorf_re_151104_01.empf

Areas : N-Empfehlung kg N/ha







Use of modern technology in fodder production

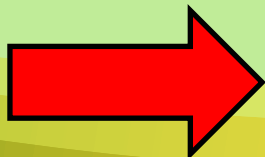
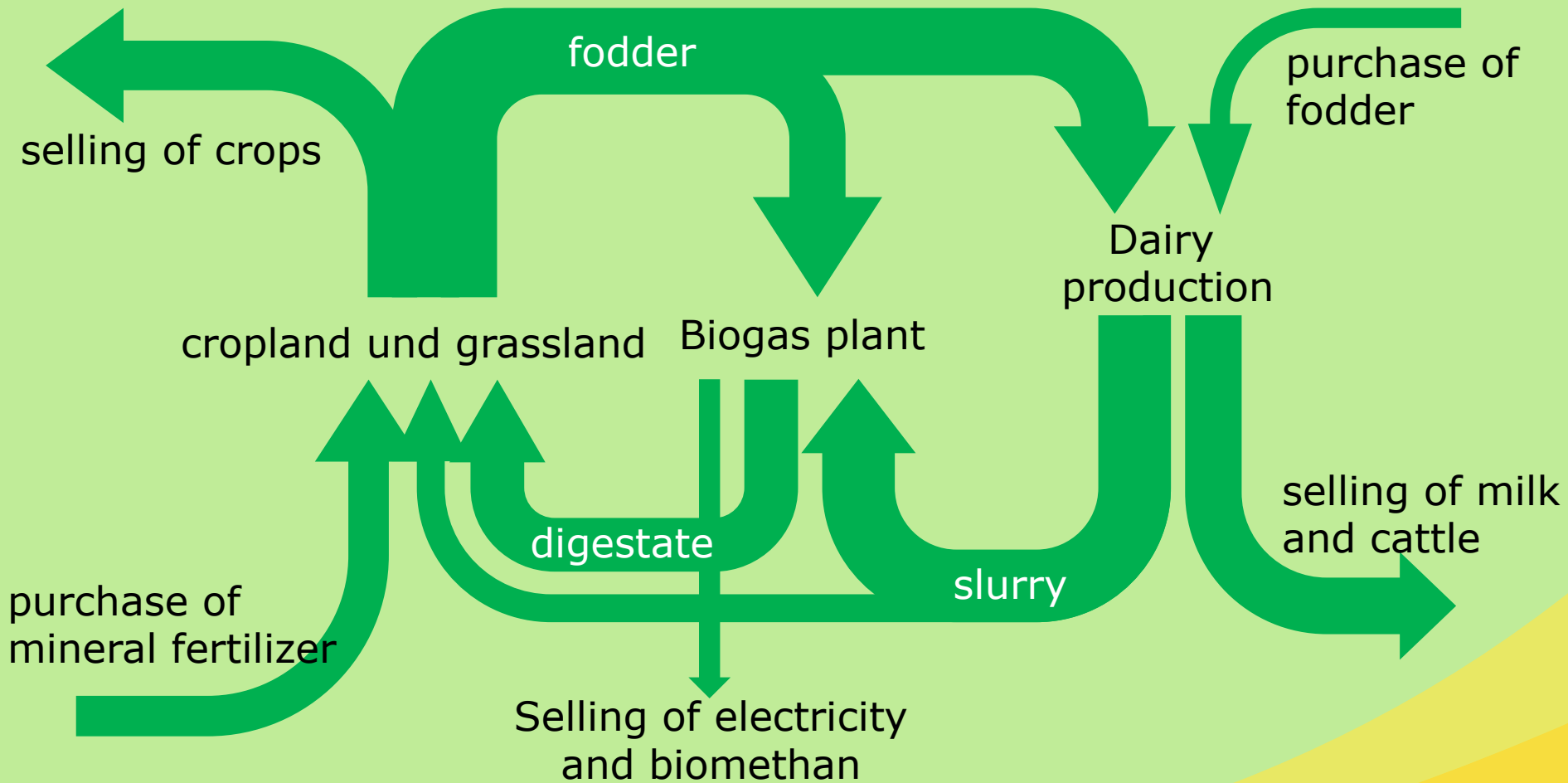








Nutrient cycle



High intern nutrient turnover





Thank you for your attention!